



SET LININGS INT. S.A.

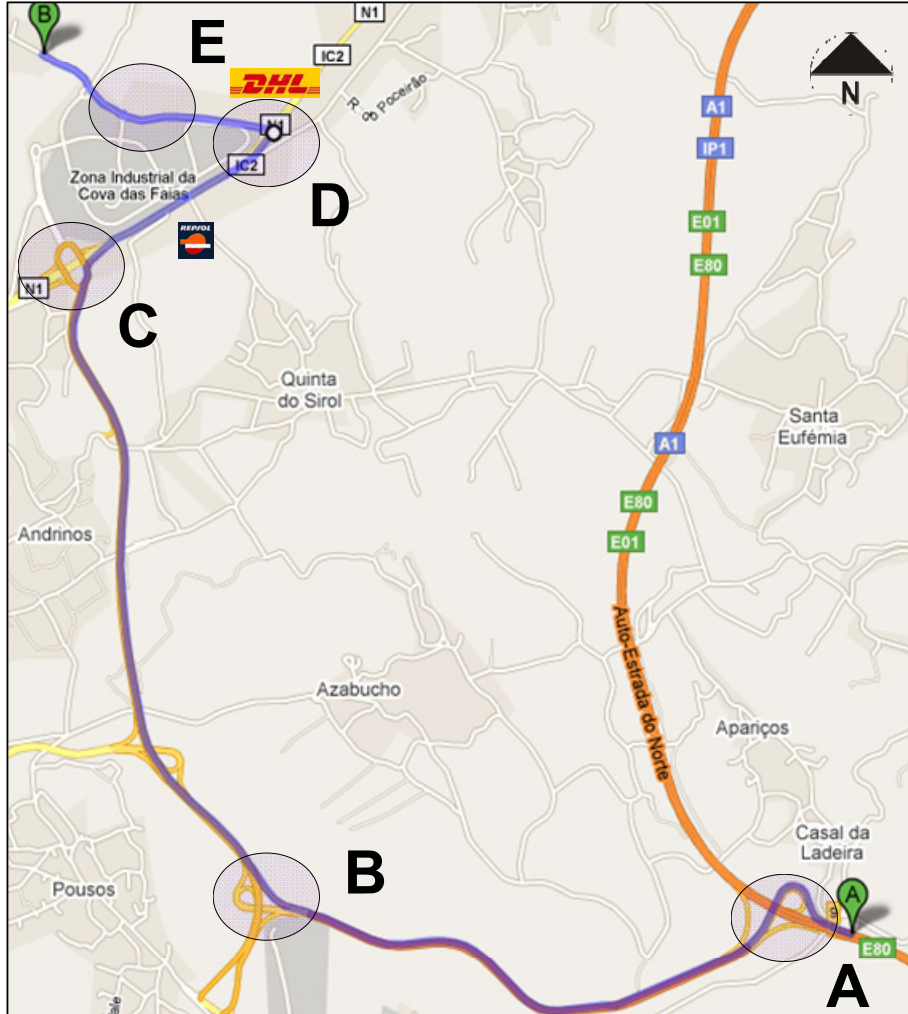
**SET LININGS INTERNATIONAL S.A.**  
LOGISTICS DEPARTMENT

Rua das Moitas Altas, Armazém 3  
Pinheiros  
2415-799 Leiria  
Portugal  
Tel: (+351) 244 821 403  
Fax: (+351) 244 821 401



**GPS COORDINATES:**

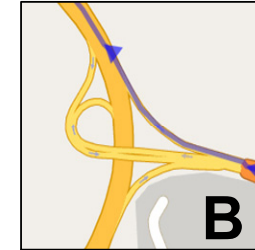
N: 39.77525  
E: -8.77881



Driving on A1/E80 coming from:

- Lisbon: Exit 9 to Leira/Marinha Grande
- Porto: Exit to A8/Leiria/Marinha Grande

**Drive for 2.8 Km**



Take the exit to:

**A8/Leiria/Marinha Grande**

**Drive for 3.2 Km**



At the roundabout take:

**1st Exit towards Porto/Pombal – IC2**

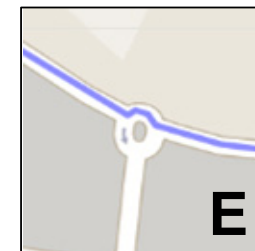
**Drive for 1 Km**



At the traffic signal:

Turn **Left** towards **Pinheiros**

**Drive for 700 m**



At the roundabout:

Take the **1st Exit**

Then, after 600 m:

Take the **2nd turn right. Arrival**